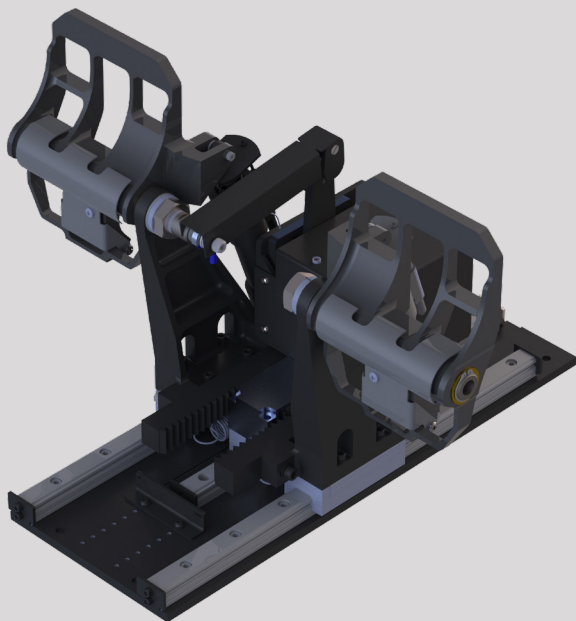


Compact Plus Pedals



Built for control

UH-60 style active pedals for use with the Inceptor Control Module and 60V supply to provide pedal forces up to 534N. Foot on pedal switches. Utilises 1 axis in the ICM. Feature-rich, highly reconfigurable and suitable for single or dual (linked) cockpit configurations.

Features

- Programmable feel characteristics
- Real-time control
- Reconfigurable
- Electronically linkable

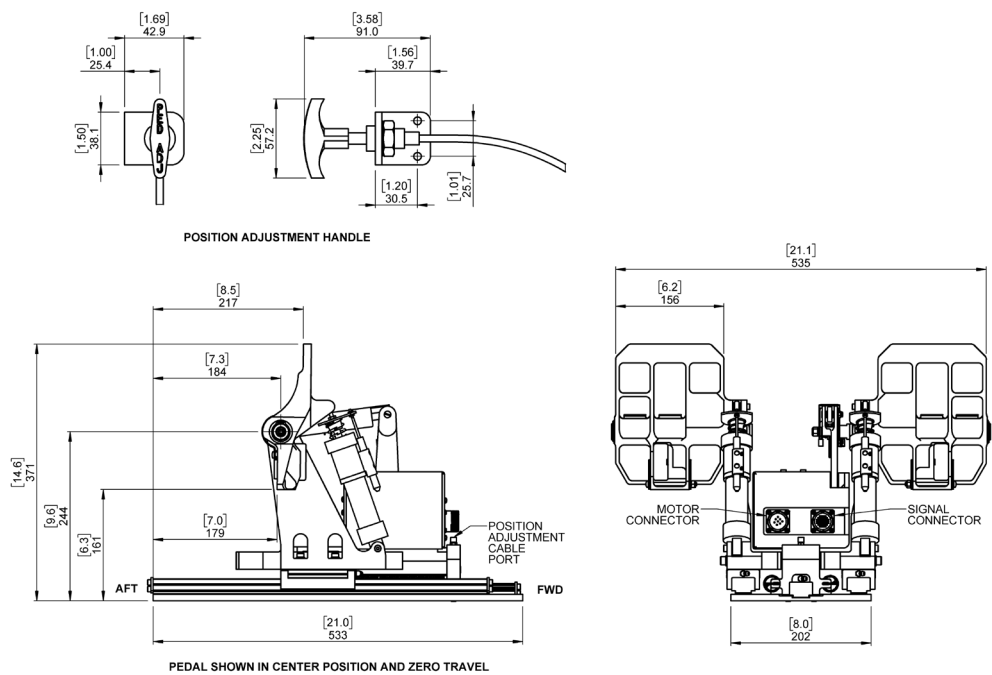
Description	Specification
Continuous operational force	534N (120 lbf)
Active travel	200mm
Maximum velocity	100mm/s
Interconnecting cables	2 x Interconnecting cable (5.5 m max) 1 x Power cable
Grip switch wiring	Trim switch and toe brakes sensors (flying lead to Molex connector)
Software interface	UDP over 1000Base-T ethernet
Input power supply	ICM
Weight	32 kg (70.5 lb)

Our products work even better together

With versatility in mind, all of our active controls are commanded by a dedicated electronics Inceptor Control Module (ICM), which provides an ethernet interface allowing minimal integration effort. From a single fixed wing cockpit to dual rotary cockpit configurations, multiple ICMs can be used in combination to provide designers with total flexibility.



Product Integration



How do I connect and control my new Stirling simulator product?

Stirling Dynamics' active controls interface to your simulator software through a UDP over LAN connection. Multiple systems can be connected via the LAN if they have their own IP address. We can provide a separate GUI (Graphical User Interface) that can seed the devices with specific settings, or you can send message sequences to configure your devices in real time. Stirling Dynamics will also provide you with all the integration documentation you will need to successfully set up your new control product.

Dashed lines supplied by client.
Dotted lines supplied by client or Stirling Dynamics.

